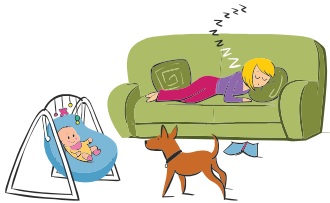


THE 5 TYPES OF SUPERVISION

1



ABSENT

Adult not in room with dog and baby/toddler



2



PASSIVE

Adult in same location but distracted and not watching



3

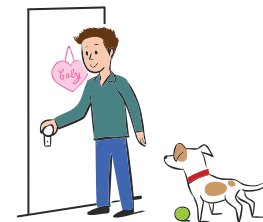


REACTIVE

Responding after dog or child is too close



4



PROACTIVE

Planning and preparing safe separation.



5



ACTIVE

Full awake adult supervision

